



TRUST

RESPECT



CREATIVITY



CURIOSITY

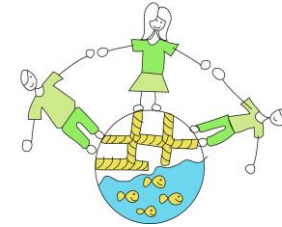
DIVERSITY



KINDNESS



**Bridport Primary School believes in a world of possibilities.
Head of School Application Pack**



Bridport Primary School Vision Statement 2016

At Bridport Primary we **'Believe in a world of possibilities...'** and aim to achieve a **'Thriving community growing together'**

By doing the following:

- Understanding and embracing one another's unique qualities, talents and skills
- Acknowledging our mistakes without fear and learning from them
- Maintaining a culture where hard work and effort is valued
- Embracing challenges with openness and confidence in our shared capabilities
- Encouraging ambitious attitudes and securing successful outcomes for all
- Being optimistic and hopeful about the future and what we can all achieve
- Recognising that by building respectful relationships we will flourish
- Growing resilient and reflective attitudes in all we do
- Listening to and learning alongside one another
- Being aware of and ready for a continually changing world landscape
- Laughing together, showing kindness and enjoying what we do